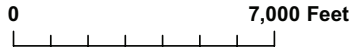


# Predicted High Park Fire Flood Response: South Fork Cache la Poudre



USDA Natural Resources Conservation Service

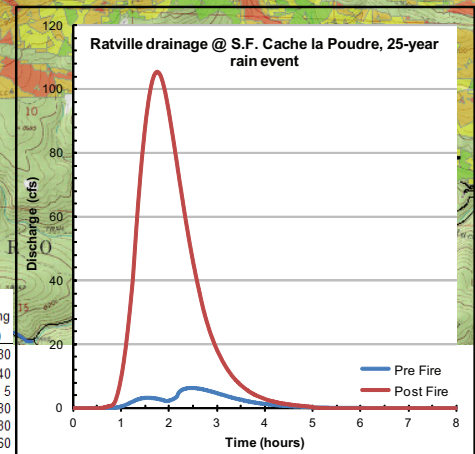
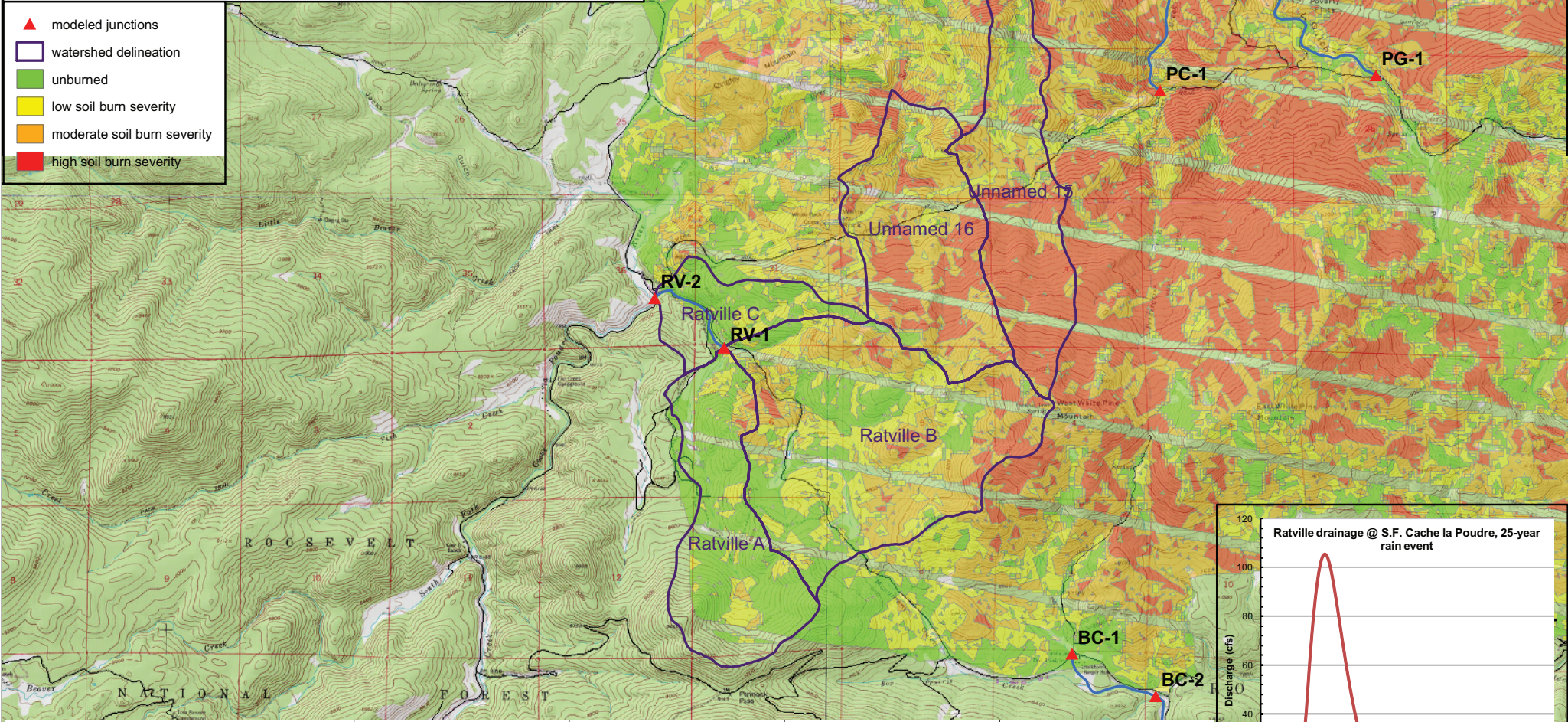


1:40,000

10/1/2012



- ▲ modeled junctions
- watershed delineation
- unburned
- low soil burn severity
- moderate soil burn severity
- high soil burn severity



| Junction or Catchment | Drainage Area (mi <sup>2</sup> ) | 2-Year Rain Event (0.8 inches) |           |           |              | 10-Year Rain Event (1.5 inches) |           |           |              | 25-Year Rain Event (1.8 inches) |           |           |              | 50-Year Rain Event (2.2 inches) |           |           |              | 100-Year Rain Event (2.4 inches) |           |           |              |
|-----------------------|----------------------------------|--------------------------------|-----------|-----------|--------------|---------------------------------|-----------|-----------|--------------|---------------------------------|-----------|-----------|--------------|---------------------------------|-----------|-----------|--------------|----------------------------------|-----------|-----------|--------------|
|                       |                                  | Predicted Flow (cfs)           |           | Post/Pre  | Sed. Bulking | Predicted Flow (cfs)            |           | Post/Pre  | Sed. Bulking | Predicted Flow (cfs)            |           | Post/Pre  | Sed. Bulking | Predicted Flow (cfs)            |           | Post/Pre  | Sed. Bulking | Predicted Flow (cfs)             |           | Post/Pre  | Sed. Bulking |
|                       |                                  | Pre Fire                       | Post Fire | Peak Flow | Flow (cfs)   | Pre Fire                        | Post Fire | Peak Flow | Flow (cfs)   | Pre Fire                        | Post Fire | Peak Flow | Flow (cfs)   | Pre Fire                        | Post Fire | Peak Flow | Flow (cfs)   | Pre Fire                         | Post Fire | Peak Flow | Flow (cfs)   |
| Unnamed 15            | 1.21                             | 0                              | 16        | n/a       | 20           | 2.1                             | 170       | 79        | 210          | 16                              | 260       | 17        | 330          | 52                              | 420       | 8.0       | 520          | 76                               | 500       | 6.6       | 630          |
| Unnamed 16            | 1.30                             | 0                              | 0         | n/a       | 0            | 0                               | 83        | n/a       | 100          | 0                               | 160       | n/a       | 200          | 8.6                             | 280       | 32        | 350          | 20                               | 350       | 17        | 440          |
| Ratville A            | 1.16                             | 0                              | 0         | n/a       | 0            | 0                               | 0         | n/a       | 0            | 0                               | 0         | n/a       | 0            | 0                               | 0.8       | n/a       | 1            | 1.3                              | 5.2       | 4.0       | 5            |
| Ratville B            | 2.38                             | 0                              | 0         | n/a       | 0            | 0                               | 37        | n/a       | 41           | 5.8                             | 100       | 17        | 110          | 45                              | 230       | 5.0       | 250          | 76                               | 300       | 3.9       | 330          |
| RV-1                  | 3.54                             | 0                              | 0         | n/a       | 0            | 0                               | 37        | n/a       | 41           | 5.8                             | 100       | 17        | 110          | 45                              | 230       | 5.0       | 250          | 78                               | 300       | 3.9       | 330          |
| RV-2                  | 4.02                             | 0                              | 0         | n/a       | 0            | 0                               | 37        | n/a       | 41           | 6.2                             | 110       | 17        | 120          | 51                              | 240       | 4.7       | 270          | 88                               | 330       | 3.7       | 360          |