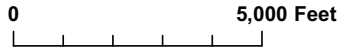


Predicted High Park Fire Flood Response: Lewstone Creek



USDA Natural Resources Conservation Service

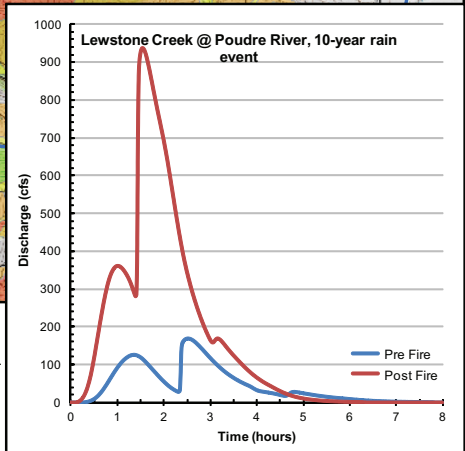
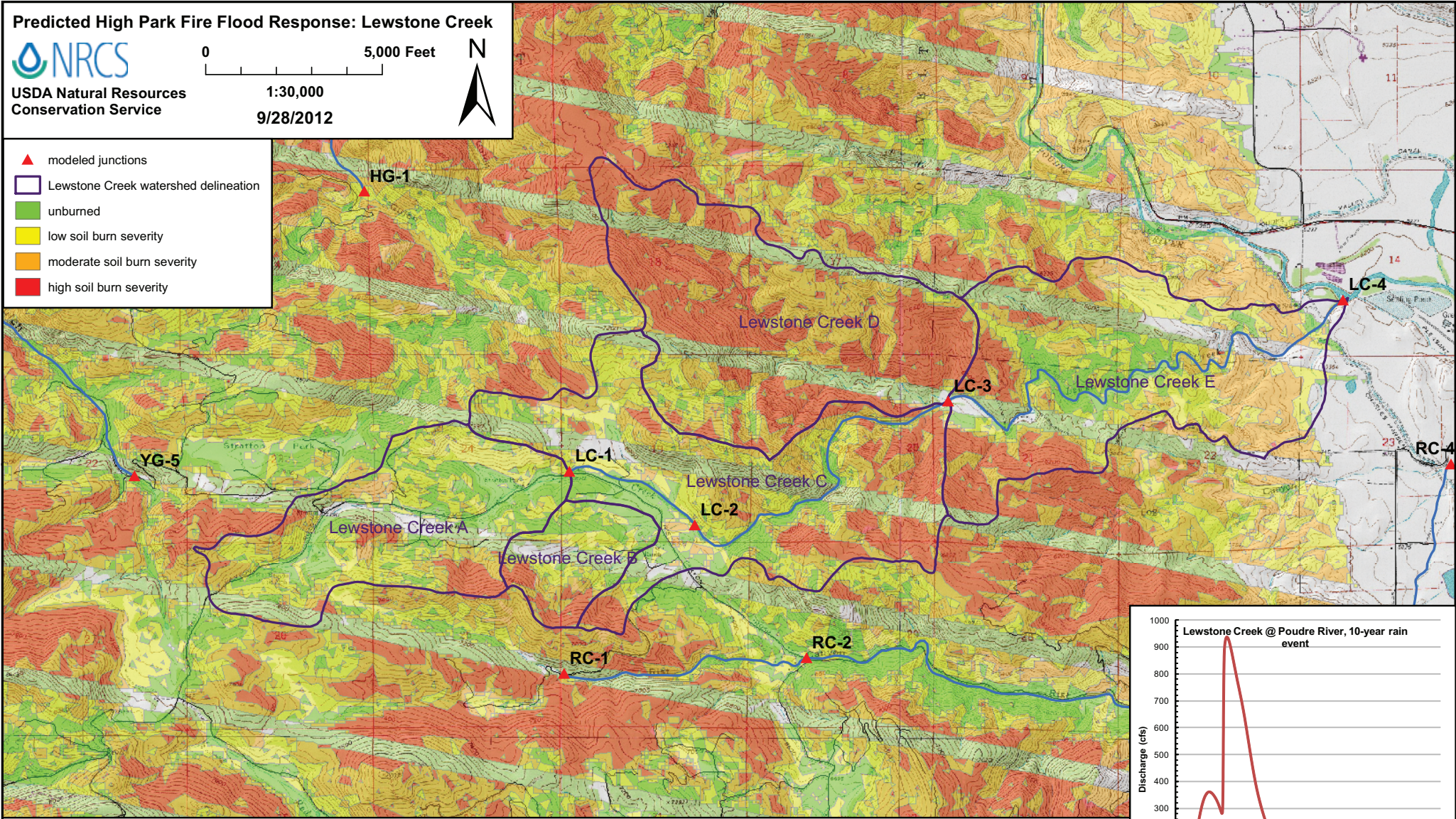


1:30,000

9/28/2012



- ▲ modeled junctions
- Lewstone Creek watershed delineation
- unburned
- low soil burn severity
- moderate soil burn severity
- high soil burn severity



Junction or Catchment	Drainage Area (mi ²)	2-Year Rain Event (0.8 inches)				10-Year Rain Event (1.5 inches)				25-Year Rain Event (1.8 inches)				50-Year Rain Event (2.2 inches)				100-Year Rain Event (2.4 inches)			
		Predicted Flow (cfs) Pre Fire	Post Fire	Peak Flow	Sed. Bulking Flow (cfs)	Predicted Flow (cfs) Pre Fire	Post Fire	Peak Flow	Sed. Bulking Flow (cfs)	Predicted Flow (cfs) Pre Fire	Post Fire	Peak Flow	Sed. Bulking Flow (cfs)	Predicted Flow (cfs) Pre Fire	Post Fire	Peak Flow	Sed. Bulking Flow (cfs)	Predicted Flow (cfs) Pre Fire	Post Fire	Peak Flow	Sed. Bulking Flow (cfs)
LC-1	1.20	0	0.8	n/a	1	23	92	4.0	100	60	170	2.8	180	130	280	2.2	310	170	350	2.1	390
Lewstone Creek B	0.35	0	0.4	n/a	0	9.7	32	3.3	35	23	59	2.6	65	46	110	2.3	120	62	130	2.1	140
Lewstone Creek D	1.79	0	100	n/a	130	75	550	7.4	690	150	800	5.2	1000	290	1200	4.1	1500	370	1400	3.7	1700
LC-3	5.15	0	130	n/a	140	150	740	4.8	820	310	1100	3.6	1200	570	1700	2.9	1800	720	2000	2.7	2200
LC-4	6.97	1.5	130	86	140	170	940	5.6	1000	350	1400	4.1	1600	700	2200	3.2	2500	910	2700	2.9	2900